



KAMCHATKA SNOW SHEEP & KORYAK SNOW SHEEP



In Kamchatka you will find a spectacular nature, where you can put down some of the most renowned species of game - and then some



Difficult hunt



Requires good level of
fitness



Accommodation in a castle



Mountain Hunt



Spot-and-Stalk Hunt

HIGHLIGHTS & DESCRIPTION

Kamchatka Snow Sheep & Koryak Snow Sheep

Overview

This more than 1,500 km long peninsula does not only impress hunters with the tremendous trophies found here, it can also offer an uniquely wonderful landscape. From a hunting perspective snow sheep, brown bear and moose are the most interesting game species. It is also possible to find caribou, wolf, lynx, red fox, polar fox, otter, Siberian grouse and snow partridge.

Along the northern coastline of the peninsula you can not only find various species of seals, but also walrus weighing up to 1,500kg and polar bears. Kamchatka does not only offer a plentiful bounty to hunters, anglers will also be well rewarded. The rivers and streams are home to a number of species of trout, char and salmon, and the huge run of salmon that takes place in the summer and early autumn, provides the main source of food for the brown bears.

Kamchatka snow sheep can be found in the central part of the Kamchatka peninsula. The huge horns of the sheep here make them the largest sub-species of snow sheep in Russia, and actually it is also the species, whose trophy base is the thickest of all snow sheep species of Asia. The average trophy size is between 34-37 inches, while some rams are shot with horns of 40 inches and above. The sheep live up in the mountains, and the hunt takes place in areas, that are often rather steep, at an altitude of between 1,500 – 2,200m a.s.l.

Koryak snow sheep are found in the northern part of the Kamchatka peninsula near the border with Chukotka.

HIGHLIGHTS

- A beautiful, unusual trophy
- Outstanding scenery, unique in character
- Hunting on foot in beautiful mountain terrain
- A really good population of game



**DO YOU HAVE
QUESTIONS?**



ERIK PEDERSEN BRINKMANN

E-mail: epb@diana.dk
Telephone: (+45) 63 21 43 17



ERIK HAHN PEDERSEN

E-mail: ehp@diana.dk
Telephone: (+45) 22 19 86 54

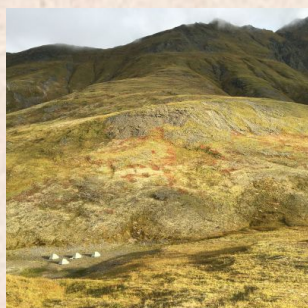
Koryak snow sheep are classified as the sheep that occur north of latitude 60°. Our hunting district lies at a latitude of 62° north. Koryak snow sheep are somewhat smaller than Kamchatka snow sheep, with regard to both body and trophy size. From Petropavlosk hunters take a further domestic flight to Korf, from where you will travel to the hunting district by helicopter.

Hunting season

The best time to hunt here is from the start of August to mid-September. Climate: in August daytime temperatures are usually between 15° to 25° C, while at night it is usually between 5° and 15° C, however the temperature can drop as low as -5° C.

Hunting Area

This more than 1,500 km long peninsula does not only impress hunters with the tremendous trophies found here, it can also offer an uniquely wonderful landscape. Here you will find clear air, snow capped mountains up to 3,000m in height, deserted plateaus, forested valleys with crystal clear rivers and streams. Kamchatka is a peninsula of "fire and ice". Of the circa. 150 volcanoes found here, 28 are still active. From a hunting perspective snow sheep, brown bear and moose are the most interesting game species. It is also possible to find caribou, wolf, lynx, red fox, polar fox, otter, Siberian grouse and snow partridge.



**DO YOU HAVE
QUESTIONS?**



ERIK PEDERSEN BRINKMANN

E-mail: epb@diana.dk
Telephone: (+45) 63 21 43 17



ERIK HAHN PEDERSEN

E-mail: ehp@diana.dk
Telephone: (+45) 22 19 86 54

ACCOMMODATION Snow Sheep Camp



The camps consist of modern tents which are wind- and waterproof. There is a separate large tent for dining and one for shower. The camps are located in mountain valleys at 2500 -3000 feet (800 -1000m). Every camp has a cook who can offer you home style meals. Spike camps are used to overnight when needed. Each hunter will have his own tent.

**DO YOU HAVE
QUESTIONS?**



ERIK PEDERSEN BRINKMANN

E-mail: epb@diana.dk
Telephone: (+45) 63 21 43 17



ERIK HAHN PEDERSEN

E-mail: ehp@diana.dk
Telephone: (+45) 22 19 86 54

PARTNER **Ansten Østbye**



Our Norwegian partner Ansten Østbye can be said to be almost a legend in terms of hunting in Russia and Asia.

Before the fall of the Wall any hunting in the former Soviet Union was entirely state-controlled, but with the growing liberalization of the hunting, there came the other players on the field, and Ansten Østbye was one of the first foreigners who could offer hunting in the big exciting country. So since 1991 Ansten has sent hundreds of hunters on challenging adventures, and on most of the hunts with himself as the group leader. It has for many people given a great sense of security that at these remote destinations to have a Scandinavian hunting organizer. We have had the pleasure to work with Ansten since 2006.

Ansten is obviously working closely with good local forces, and has since made sure that his guests are sent to the very best areas for the different species.

**DO YOU HAVE
QUESTIONS?**



ERIK PEDERSEN BRINKMANN

E-mail: epb@diana.dk
Telephone: (+45) 63 21 43 17



ERIK HAHN PEDERSEN

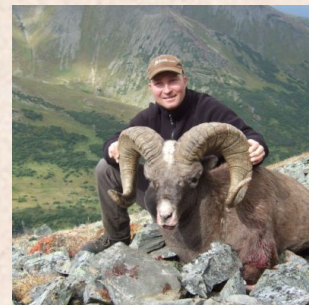
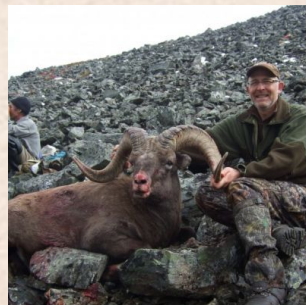
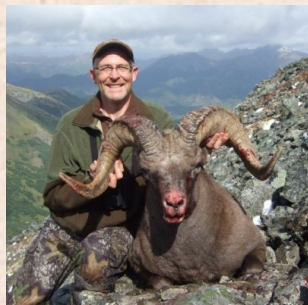
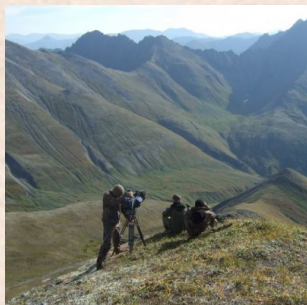
E-mail: ehp@diana.dk
Telephone: (+45) 22 19 86 54

HUNTING AREA

Hunting Area - Kamchatka Snow Sheep & Kory...



This more than 1,500 km long peninsula does not only impress hunters with the tremendous trophies found here, it can also offer an uniquely wonderful landscape. Here you will find clear air, snow capped mountains up to 3,000m in height, deserted plateaus, forested valleys with crystal clear rivers and streams. Kamchatka is a peninsula of "fire and ice". Of the circa. 150 volcanoes found here, 28 are still active. From a hunting perspective snow sheep, brown bear and moose are the most interesting game species. It is also possible to find caribou, wolf, lynx, red fox, polar fox, otter, Siberian grouse and snow partridge.



**DO YOU HAVE
QUESTIONS?**



ERIK PEDERSEN BRINKMANN

E-mail: epb@diana.dk
Telephone: (+45) 63 21 43 17



ERIK HAHN PEDERSEN

E-mail: ehp@diana.dk
Telephone: (+45) 22 19 86 54

Price and info on your tour

Specification of price

Prices

Description	Possible Lodging Dates	Price from (per. person)
-------------	------------------------	--------------------------

The price includes

- 14 day tour including circa. 9 days hunting.
- Trophy fees for a Kamchatka/Koryak Snow sheep USD 4,500
- Assistance in Moscow and Petropavlosk
- Return transport Petropavlovsk – hunting camp
- All meals during your stay in camp.
- Guided hunting 1:1
- Export permits
- Weapon permits and veterinarian documentation
- Scandinavian/English speaking group leader.
- Use of a Satellite telephone for 2 weeks (ex. shipping costs and usage above 20 min. speaking time) - value € 330*

The price does not include

- Return international flights to Moscow
- Return domestic flights Moscow – Petropavlosk/Korf
- Hotel accommodation in Petropavlosk
- Visa fees € 200,-
- Any extra trophy fees
- Excess baggage charges
- Shipment of trophies home
- Drinks
- EU-public liability insurance € 9,00,-

**DO YOU HAVE
QUESTIONS?**



ERIK PEDERSEN BRINKMANN

E-mail: epb@diana.dk
Telephone: (+45) 63 21 43 17



ERIK HAHN PEDERSEN

E-mail: ehp@diana.dk
Telephone: (+45) 22 19 86 54



GAME

Kamchatka Snow Sheep & Koryak Snow Sheep



Snow Sheep

*DO YOU HAVE
QUESTIONS?*



ERIK PEDERSEN BRINKMANN

E-mail: epb@diana.dk
Telephone: (+45) 63 21 43 17



ERIK HAHN PEDERSEN

E-mail: ehp@diana.dk
Telephone: (+45) 22 19 86 54

About us



Limpopo & Diana Hunting Tours

Limpopo & Diana Hunting Tours Limpopo Travel and Diana Hunting Tours – which today are one and the same company - are built on more than four decades of experience in the hunting travel industry. Diana Hunting tours was founded in Svendborg back in 1974 by the internationally known figure in the hunting tour industry, Jan Krössteig, who today remains shareholder and chairman of the concern.

Over the years the company has grown into the world's largest hunting travel office, with hunting partners in more than 40 counties and customers from around the world. This has only been possible because of the strength of our customers faith in our company, our partners and the service we provide. We take great pride in the fact that a significant number of our customers are "regulars" you not only travel with us frequently, but also bring with then new customers into our business.

The hunting travel market has never been as chaotic as it is at present. There have always been a mass of smalland medium sized agencies trading on the market, but in recent years the rise of the internet has really opened up the market for direct booking and packages sold by "agents" of more or less transparent character and by agencies based abroad.

A large number of hunters have had their fingers burnt booking "cheap" packages, which rarely proceed as promised, Generally it is only when things go wrong that the unfortunate hunter who bought the tour first realises what the difference between a good Danish travel agency - with all the security that entails -and a questionable foreign seller, really is.

What we offer our customers is a rather unique level of security. Our experienced staff really know our destinations and can provide highly qualified advice tailored to the customer's individual requirements. If you book your hunting tour through us you also have a guarantee against the unlikely event of bankruptcy through the Danish Travel Guarantee Fund. Our long standing membership of the Danish Travel Agency Association is also a guarantee for professional service throughout all the proceedings that a hunting tour entails - also in the event of something not going quite as planned. As one of our customers you can expect around the clock support, via our emergency hotline, in the event of anything at all going wrong.

**DO YOU HAVE
QUESTIONS?**



ERIK PEDERSEN BRINKMANN

E-mail: epb@diana.dk
Telephone: (+45) 63 21 43 17



ERIK HAHN PEDERSEN

E-mail: ehp@diana.dk
Telephone: (+45) 22 19 86 54