



ANTILOPE HUNT AT AFRICAN ECHO SAFARIS IN EASTERN CAPE MIDLANDS



The concession lies nestled between the mountains, typical of the Eastern Cape, in the Grahamstown and Fort Beaufort region in the Eastern Cape Province of South Africa. The concession is approximately 150 km from Port Elizabeth Airport. Please refer to the map provided.



Challenging hunt



Requires moderate level of fitness



Accommodation in a lodge



Safari Hunt



Cull Hunt/Hind Stalking

HIGHLIGHTS & DESCRIPTION

Antelope Hunt at African Echo Safaris in E...

Overview

There are many warthogs, but other species, which are typical for the Eastern Cape province, are hunted as well such as Cape Bushbuck, Mountain Reedbuck and Blesbok.

While hunting in this beautiful part of the Eastern Cape, we will be staying in well-equipped hunting lodges.

The distances that we will be shooting can range between 70 and 250 meters. Flat-shooting calibers in the .270 Winchester and .300 Winchester Magnum range are preferable, although larger calibers, such as .375 Holland Magnum can come in handy. Telescopic sights with a 6x magnification are more than adequate.

Temperatures vary from -3°C to 20°C in winter and 15°C to 40°C in summer. The vegetation consists mainly of typical Eastern Cape Acacia thorn Bushveld, valley Bushveld and thicket.

HIGHLIGHTS

- Very reasonable trophy fees
- No malaria in this part of South Africa
- Species typical for Eastern cape province are: Cape bushbuck, mountain reedbuck and blesbok
- Many warthogs



**DO YOU HAVE
QUESTIONS?**



JOAKIM PEDERSEN

E-mail: jop@diana.dk
Telephone: (+45) 63 21 10 26



THOMAS M. SØRENSEN

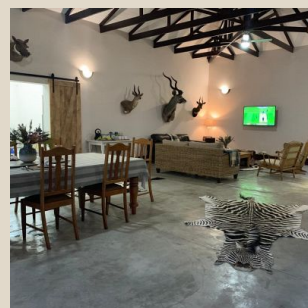
E-mail: tms@diana.dk
Telephone: (+45) 63 21 43 00

ACCOMMODATION Katrivier Conservancy Lodge



When hunting in this beautiful part of Eastern Cape, hunter are accommodated in a well equipped hunting lodge. The rooms are spacious and cleaned daily. There is also a swimmingpool.

Eastern Cape is famous for its great diversity and striking contrasts. Here you can find everything from the bright lights of the city, to lush evergreen forests, open grasslands, an pristine coastline and a truly golden landscape. Experience the colourful and fascinating culture of the native Xhosa people. Only two hundred years ago the vast majority of the people here where members of this culture, but today the population is as varied as the landscape. Port Elizabeth (or PE, as the city is sometimes called) is the biggest city in Eastern Cape, and the fifth largest in the country.



**DO YOU HAVE
QUESTIONS?**



JOAKIM PEDERSEN

E-mail: jop@diana.dk
Telephone: (+45) 63 21 10 26



THOMAS M. SØRENSEN

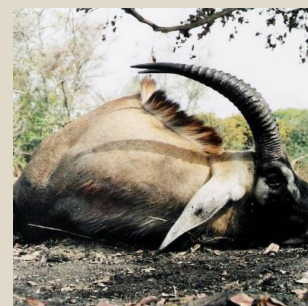
E-mail: tms@diana.dk
Telephone: (+45) 63 21 43 00

PARTNER African Echo Safaris



The owner of African Echo Safaris is Glaeser Conradie. Glaeser is South African and for many years has enjoyed a successful career as an outfitter and PH (Professional Hunter) in Mozambique, South Africa, West and Northern Africa. He is a skilful, likeable and very committed PH with a wealth of hunting experience from a wide range of African countries. He really loves to work hard to achieve our hunter's goals and to give them some great experiences when out hunting with him. Glaeser is a registered member of ACP, PHASA and the SCI. African Echo Safaris is a Craig Boddington Endorsed Outfitter. He is very well organised, and a very pleasant person to go out hunting with..

Diana Huntingtours & Limpopo Travel have been working together with Glaeser in Burkina Faso since 2012, and in South Africa since 2016. Glaeser's company, African Echo Safaris, has now been in existence for more than two decades, and has grown into a successful, international safari operator. Our partnership with Glaeser works perfectly, so if one day you arrive in one of his hunting districts, we are certain you will return home having enjoyed some unforgettable experiences.



**DO YOU HAVE
QUESTIONS?**



JOAKIM PEDERSEN

E-mail: jop@diana.dk
Telephone: (+45) 63 21 10 26



THOMAS M. SØRENSEN

E-mail: tms@diana.dk
Telephone: (+45) 63 21 43 00

HUNTING AREA Eastern Cape Midlands



It is possible to hunt Kudu, Waterbuck, Nyala, Oryx, Blue Wildebeest, Black Wildebeest, Impala, Mountain Reedbuck, Common Reedbuck, Black and white springbok, Bontebok, Cape Eland, Burchell's Zebra, Red Hartebeest, Red Lechwe, Steinbuck, Common Duiker, warthog and many other species. The hunt takes place on foot in hilly terrain, so it is necessary for hunters to be in good physical shape.

In Eastern Cape you can find lush forests, open grasslands, a pristine coastline and a truly golden landscape. The climate can range from temperate to very hot. Temperatures during the summer (November to February) can reach over 40 degrees. Winter days (June-August) are mild, but it can be cold at night with the occasional night-frost. The average annual rainfall is around 450 mm., which is spread out throughout the year, although it often peaks in March/April and September/October.



**DO YOU HAVE
QUESTIONS?**



JOAKIM PEDERSEN

E-mail: jop@diana.dk
Telephone: (+45) 63 21 10 26



THOMAS M. SØRENSEN

E-mail: tms@diana.dk
Telephone: (+45) 63 21 43 00

Price and info on your tour

Specification of price

Prices

Description	Possible Lodging Dates	Price from (per. person)
-------------	------------------------	--------------------------

The price includes

- 6 days accommodation in a double room with full board and a limited range of drinks
- 5 days hunting with a PH, skinner and tracker
- Laundry service
- Transfers
- All transport during the hunt
- Hunting license
- Skinning and preliminary trophy preparation in camp

The price does not include

- Trophy fees
- Return flights from Europe
- Taxidermy and transport of trophies home
- Gratuities
- Travel and cancellation insurance
- EU-public liability insurance EUR 10,00,- per person
- Everything else not included under "the price includes"
- 200,- euro booking fee per hunter

**DO YOU HAVE
QUESTIONS?**



JOAKIM PEDERSEN

E-mail: jop@diana.dk
Telephone: (+45) 63 21 10 26



THOMAS M. SØRENSEN

E-mail: tms@diana.dk
Telephone: (+45) 63 21 43 00

Trophy Price List 2024 (EURO)

Eland	1900	-	Hartebeest	995
Nyala	1750	-	Zebra	995
Lechwe	POR	-	Cape Bushbuck	685
Giraffe	POR	-	Mt. Reedbuck	490
Waterbuck	1550	-	Impala	375
Cm. Reedbuck	POR	-	Blesbok	375
Cape Kudu	1550	-	Springbuck	375
Grey Rhebok	POR	-	Warthog	345
Oryx	1250	-	Steenbuck	255
Blue Wildebeest	995	-	Duiker	255
Black Wildebeest	995		Warthog cull	145

**DO YOU HAVE
QUESTIONS?**



JOAKIM PEDERSEN

E-mail: jop@diana.dk
Telephone: (+45) 63 21 10 26



THOMAS M. SØRENSEN

E-mail: tms@diana.dk
Telephone: (+45) 63 21 43 00



GAME

Antelope Hunt at African Echo Safaris in E...



Burchell's Zebra



Red Lechwe/Black
Lechwe/Kafue



Waterbuck



Black Wildebeest



Steenbuck/Steenbok



Bontebok/Blesbok



Oryx, Gemsbok



Hartebeest, Red



Springbuck/Springbok



Blue Wildebeest



Nyala



Springbuck/Springbok,
Black

To be continued on the next page...



GAME

Antelope Hunt at African Echo Safaris in E...



Eland, Cape/Livingstone,
Patterson's



Reedbuck, Mountain



Warthog



Kudu, Lesser



Duiker, Grey/Duiker,
Grimm's (Common)



Reedbuck (Common)



Bushbuck, Cape



Impala

**DO YOU HAVE
QUESTIONS?**



JOAKIM PEDERSEN

E-mail: jop@diana.dk
Telephone: (+45) 63 21 10 26



THOMAS M. SØRENSEN

E-mail: tms@diana.dk
Telephone: (+45) 63 21 43 00

About us



Limpopo & Diana Hunting Tours

Limpopo & Diana Hunting Tours Limpopo Travel and Diana Hunting Tours – which today are one and the same company - are built on more than four decades of experience in the hunting travel industry. Diana Hunting tours was founded in Svendborg back in 1974 by the internationally known figure in the hunting tour industry, Jan Krossteig, who today remains shareholder and chairman of the concern.

Over the years the company has grown into the world's largest hunting travel office, with hunting partners in more than 40 counties and customers from around the world. This has only been possible because of the strength of our customers faith in our company, our partners and the service we provide. We take great pride in the fact that a significant number of our customers are "regulars" you not only travel with us frequently, but also bring with then new customers into our business.

The hunting travel market has never been as chaotic as it is at present. There have always been a mass of smalland medium sized agencies trading on the market, but in recent years the rise of the internet has really opened up the market for direct booking and packages sold by "agents" of more or less transparent character and by agencies based abroad.

A large number of hunters have had their fingers burnt booking "cheap" packages, which rarely proceed as promised, Generally it is only when things go wrong that the unfortunate hunter who bought the tour first realises what the difference between a good Danish travel agency - with all the security that entails -and a questionable foreign seller, really is.

What we offer our customers is a rather unique level of security. Our experienced staff really know our destinations and can provide highly qualified advice tailored to the customer's individual requirements. If you book your hunting tour through us you also have a guarantee against the unlikely event of bankruptcy through the Danish Travel Guarantee Fund. Our long standing membership of the Danish Travel Agency Association is also a guarantee for professional service throughout all the proceedings that a hunting tour entails - also in the event of something not going quite as planned. As one of our customers you can expect around the clock support, via our emergency hotline, in the event of anything at all going wrong.

**DO YOU HAVE
QUESTIONS?**



JOAKIM PEDERSEN

E-mail: jop@diana.dk
Telephone: (+45) 63 21 10 26



THOMAS M. SØRENSEN

E-mail: tms@diana.dk
Telephone: (+45) 63 21 43 00