



# BIG GAME HUNT AT NENGASHA SAFARIS



Nengasha Safaris situated in Bulawayo manage some fantastic Big Game areas and offer some of the best hunting in the western part of Zimbabwe



Challenging hunt



Requires moderate  
level of fitness



Accommodation in  
a cabin



Accommodation in  
a lodge



Big Game



Spot-and-Stalk  
Hunt



Safari Hunt



## HIGHLIGHTS & DESCRIPTION

# Big Game Hunt at Nengasha Safaris

### Overview

Zimbabwe, despite the country's long standing "lack of government", remains an unspoilt and incredibly unique hunting destination. In it's huge hunting districts our partners have been fighting a hard battle against poaching over many years. We can confirm that the poachers have been almost totally defeated, as today there are few places you can experience the wealth of game that can be found in the "protected" hunting concessions that Nengasha Safarishunt in.

The size of the trophies produced here bear witness that this outfitter know their business - right from the fantastic Ph's, to the way they pack and transport our customer's trophies back to their homes.

### HIGHLIGHTS

- Well established partner with fantastic hunting concessions in western Zimbabwe
- Can arrange everything from Big-game hunts to family safaris
- Good population of large leopards, high rate of success
- High quality hunting, tailored to meet the individual wishes of the hunter
- Possibility of hunting on a number of concessions during the same hunting tour

*DO YOU HAVE  
QUESTIONS?*



**ERIK PEDERSEN BRINKMANN**

E-mail: [epb@diana.dk](mailto:epb@diana.dk)  
Telephone: (+45) 63 21 43 17



**TINA JEPPESEN**

E-mail: [tina@diana.dk](mailto:tina@diana.dk)  
Telephone: (+45) 63 21 10 29



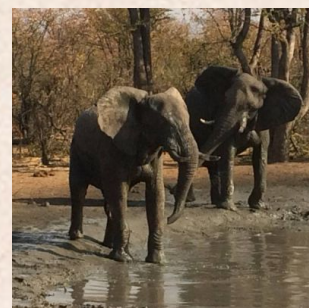
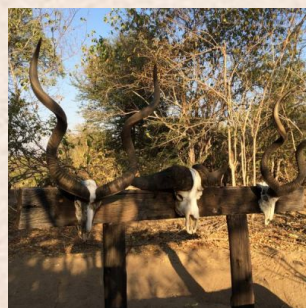
## ACCOMMODATION Deka Safari Trail



4,5 hours drive from Bulawayo.

The camp Chokamella is used for accommodation i Deka. The camp is situated by a dry river with a view towards a small waterhole, which is frequently visited by elephants, buffalo, kudu, bushbuck and lots of baboons. The camp consists of 4 bungalows, all with good beds and a private bath. In addition, a common area with dining area, bar and a campfire where a nice cool sundowner can be enjoyed after a day of hunting.

There is no roaming and no mobile signal. There is a signal 20 minutes from the camp. But the signal is very unstable so that can only be given short messages and maybe downloaded messages. Can not be guaranteed. Power from the grid and generator as backup.



**DO YOU HAVE  
QUESTIONS?**



**ERIK PEDERSEN BRINKMANN**

E-mail: [epb@diana.dk](mailto:epb@diana.dk)  
Telephone: (+45) 63 21 43 17



**TINA JEPPESEN**

E-mail: [tina@diana.dk](mailto:tina@diana.dk)  
Telephone: (+45) 63 21 10 29

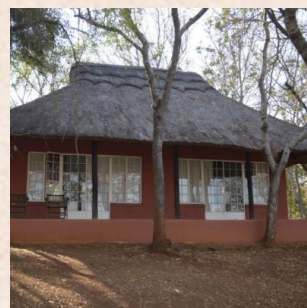
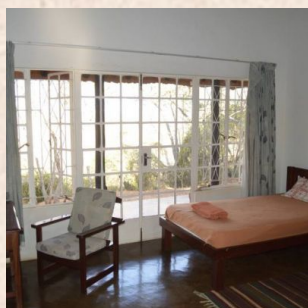
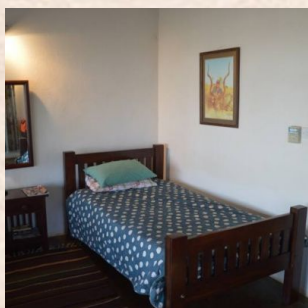


## ACCOMMODATION Dollar Block



1 hour drive from Bulawayo.

The camp consists of 3 double houses with 2 rooms each. Shower and toilet are in each room. Main area with lounge and fireplace. Indoor dining. Smaller pool as well can be used after a nice, hot day on the hunt. The camp is located in the middle of the hunting area, high, with sweeping views of the bush and to a pond. There is keen light at the pond so that you can see which animals come and drink.



**DO YOU HAVE  
QUESTIONS?**



**ERIK PEDERSEN BRINKMANN**

E-mail: [epb@diana.dk](mailto:epb@diana.dk)  
Telephone: (+45) 63 21 43 17



**TINA JEPPESEN**

E-mail: [tina@diana.dk](mailto:tina@diana.dk)  
Telephone: (+45) 63 21 10 29



## ACCOMMODATION BeitBridge Camp Fire Area

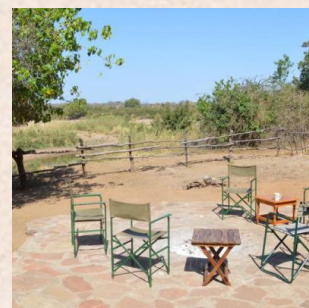


4 hours from Bulawayo.

The camp consist of two brick huts with thatched roofs, good beds and with private toilet and shower. The hut is suitable for two 2 persons. There is also a communal dining area and a nice little campfire area with view to the Limpopo River and South Africa just on the other side of the river. All in all the accommodation is a nice big-game Camp without superfluous luxury.

It is possible to hunt from a flightcamp. It is typically used for elephant and leopard hunting when hunting by the Botswana border at The Shashe River.

There is mobile signal from certain Zimbabwean operators and besides that from South Africa operator. Slow/no connection.



**DO YOU HAVE  
QUESTIONS?**



**ERIK PEDERSEN BRINKMANN**

E-mail: [epb@diana.dk](mailto:epb@diana.dk)  
Telephone: (+45) 63 21 43 17



**TINA JEPPESEN**

E-mail: [tina@diana.dk](mailto:tina@diana.dk)  
Telephone: (+45) 63 21 10 29



**PARTNER**

**Nengasha Safaris**



Nengasha Safaris, based in Bulawayo, has been operating extensively throughout Zimbabwe for more than ten years. As an established and renowned operator only experienced and knowledgeable Professional Hunter's (PH's) are utilized to offer quality hunts, packaged to suit the individual hunter's needs.

A wide range of hunts are offered, from plains game to big game safaris including Buffalo and Elephant. Some of their prime areas also produce excellent quality Sable and Leopard.

Nengasha Safaris operates mainly three different camps around Zimbabwe, each one with something unique to offer. Hence they can tailor make any hunting as requested by clients.

Each client hunts with their own Professional Hunter (PH) to ensure maximum chances of success in your hunt. Everyone of the PH's are unique in their hunting and guiding abilities and knowledge of the bush. (The stories around the campfire will not be forgotten).

Observers and family are welcome and well accommodated at

Nengasha's comfortable safari camps. Their trained and friendly staff are there to ensure that you enjoy a unique African Bush experience and an unforgettable holiday.

**DO YOU HAVE  
QUESTIONS?**



**ERIK PEDERSEN BRINKMANN**

E-mail: [epb@diana.dk](mailto:epb@diana.dk)  
Telephone: (+45) 63 21 43 17



**TINA JEPPESEN**

E-mail: [tina@diana.dk](mailto:tina@diana.dk)  
Telephone: (+45) 63 21 10 29



## HUNTING AREA Deka Safari Trail



This area is approximately 100,000 acres with a 60 km boundary with Hwange National Park. Deka is a predominantly a big game area with good Elephant, Buffalo, Leopard and Lion. The average Elephant trophy size is between 40-50lbs with a chance of over 50lbs. There is limited plains game but this area has very good Kudu and Bushbuck.

The area are more or less flat and do not very demanding to hunt. Ther are 2 big dams holding water for the game year around. Accommodation in the very nice Chokamella camp situated under some big trees for a little shadow. Each hunter has his own bungalow with good bed, en-suite bathroom – all you need on a good hunting safari. The dining area overlooks a river with a waterhole which is often visited by elephants, buffalo and numerous bushbuck, baboons and kudus.

4,5 hours drive from Bulawayo and 2 hours drive from Vic. Falls.



**DO YOU HAVE  
QUESTIONS?**



**ERIK PEDERSEN BRINKMANN**

E-mail: [epb@diana.dk](mailto:epb@diana.dk)  
Telephone: (+45) 63 21 43 17



**TINA JEPPESEN**

E-mail: [tina@diana.dk](mailto:tina@diana.dk)  
Telephone: (+45) 63 21 10 29



## HUNTING AREA Beitbridge



This is a large, 450,000 acre CAMPFIRE area stretching along the Limpopo and Shashe Rivers bordering South Africa and Botswana. The area has excellent Leopard and plains game, Crocodile and Hippo and good numbers of Elephant. The Elephant trophy size averages 30-35lbs with the occasional 50lb bull. Additionally the private, 55,000 acre Nottingham Estate hunting is incorporated into this area. This estate produces exceptional Leopard and Bushbuck!

Accommodation in nice small brickhouses situated under some big trees for a little shadow. Each hunter has his own bungalow with good bed, en-suite bathroom – all you need on a good hunting safari. The dining area overlooks the Limpopo River and a small fire-place for for you to sit and enjoy a sun-downer after a good days safari.



**DO YOU HAVE  
QUESTIONS?**



**ERIK PEDERSEN BRINKMANN**

E-mail: [epb@diana.dk](mailto:epb@diana.dk)  
Telephone: (+45) 63 21 43 17



**TINA JEPPESEN**

E-mail: [tina@diana.dk](mailto:tina@diana.dk)  
Telephone: (+45) 63 21 10 29



## HUNTING AREA

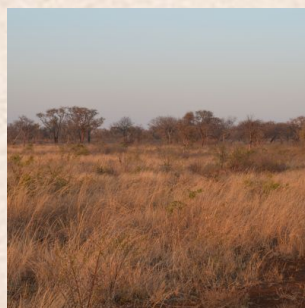
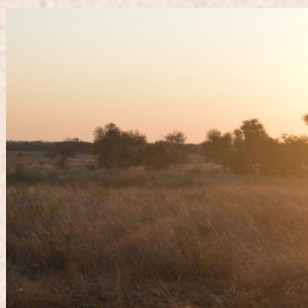
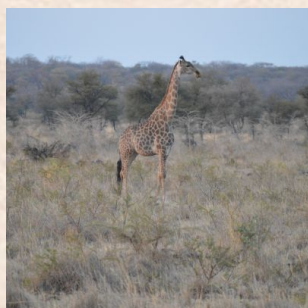
# Dollar Block & Bubi Campfire Area



Dollar Block is a 55,000 acre private ranch 100km north of Bulawayo with excellent plains game including Sable. There is also very good Leopard on Dollar Block.

The neighboring campfire area has good Leopard, Elephant (40 – 55lbs) and pockets of plains game. This hunting block can easily be used in connection with Beit Bridge and Deka. There is an easy 1 hours' drive to the airport in Bulawayo.

Accommodation is situated on the top of a small hill overlooking the bush. From the terrace you can see a small waterhole which the game often visits. Each hunter has his own bungalow with good bed, en-suite bathroom – all you need on a good hunting safari. There is even a small pool so you can easily cool down after some challenging stalking in the hot sun.



**DO YOU HAVE  
QUESTIONS?**



**ERIK PEDERSEN BRINKMANN**

E-mail: [epb@diana.dk](mailto:epb@diana.dk)  
Telephone: (+45) 63 21 43 17



**TINA JEPPESEN**

E-mail: [tina@diana.dk](mailto:tina@diana.dk)  
Telephone: (+45) 63 21 10 29



# Price and info on your tour

## Specification of price

### Prices

Description	Possible Lodging Dates	Price from (per. person)
10 Days Hunting for Elephant	9. July 2025 - 8. December 2025	\$15,995.00 (Observer \$3,795.00)
14 days hunting for Leopard and Plainsgame, 1:1	9. July 2025 - 8. December 2025	\$21,695.00 (Observer \$4,495.00)
15 days Big-Game (elephant/buffalo or leopard/buffalo or leopard/sable or elephant/leopard)	9. July 2025 - 8. December 2025	\$26,495.00 (Observer \$4,750.00)
7 days hunt for plainsgame 1:1	9. July 2025 - 8. December 2025	\$6,495.00 (Observer \$2,295.00)
7 days hunting for tuskless elephant	9. July 2025 - 8. December 2025	\$9,995.00 (Observer \$2,295.00)

### The price includes

- VIP guide in Johannesburg Airport when going to Zimbabwe
- Return transfers from Bulawayo - hunting camp
- Accommodation with full board and locally produced beverages
- Hunting with a Prof. Hunter and tracker.
- All transport during the hunt
- Skinning and salting of antelope trophies
- Transport of trophies to a local shipping agent
- 2 % Gov. Tax on their daily rate

### The price does not include

- Return flights to Bulawayo
- Airport taxes and fees:
- Trophy fees
- Transport of trophies to Bulawayo \$ 100
- Cites clearances for Leopard \$ 200 and Elephant \$ 200
- Dipping & packing, \$ 900
- Accommodation before and after the hunt
- Shipment of trophies home
- EU-public liability insurance € 10,00.-
- Gratuities

**DO YOU HAVE  
QUESTIONS?**



**ERIK PEDERSEN BRINKMANN**

E-mail: [epb@diana.dk](mailto:epb@diana.dk)  
Telephone: (+45) 63 21 43 17



**TINA JEPPESEN**

E-mail: [tina@diana.dk](mailto:tina@diana.dk)  
Telephone: (+45) 63 21 10 29



## Trophy Price List (USD)

Baboon	125
Buffalo	7250
Bushbuck	1420
Bushpig	710
Civet cat	600
Crocodile	5900
Duiker (common)	355
Eland	2375
Elephant	19995
Elephant, Tuskless	6000
Genet	355
Giraffe	2950
Grysbok	725
Hippo	5900
Honey Badger	710
Hyena, spotted	1475
Hyena, Brown	1775
Impala	355
Impala, Bait	120
Jackal	355
Klipspringer	1195
Kudu	2125
Leopard	9495
Porcupine	355
Sable	7690
Serval Cat	590
Steebbuck	710
Warthog	590
Waterbuck	2950
Wild Cat	300
Wildbeast	1300
Zebra	1425

**DO YOU HAVE  
QUESTIONS?**



**ERIK PEDERSEN BRINKMANN**

E-mail: [epb@diana.dk](mailto:epb@diana.dk)  
Telephone: (+45) 63 21 43 17



**TINA JEPPESEN**

E-mail: [tina@diana.dk](mailto:tina@diana.dk)  
Telephone: (+45) 63 21 10 29





## GAME Big Game Hunt at Nengasha Safaris



Baboon



Elephant (Africa)



Sable Antelope (Africa)



Warthog



Hyena, Spotted



African Wildcat



Duiker, Grey/Duiker,  
Grimm's (Common)



Bush Pig



Bushbuck, Cape



Giraffe



Kudu, Greater



Crocodile, Nile

*To be continued on the next page...*





## GAME Big Game Hunt at Nengasha Safaris



Burchell's Zebra



Leopard (Africa)



Waterbuck



Hippopotamus



Jackal, Side-striped



Buffalo, Cape



Klipspringer



Eland, Cape/Livingstone,  
Patterson's



Grysbuck, Sharpe's



Lion (Africa)



Impala



# About us



## Limpopo & Diana Hunting Tours

Limpopo & Diana Hunting Tours Limpopo Travel and Diana Hunting Tours – which today are one and the same company - are built on more than four decades of experience in the hunting travel industry. Diana Hunting tours was founded in Svendborg back in 1974 by the internationally known figure in the hunting tour industry, Jan Krössteig, who today remains shareholder and chairman of the concern.

Over the years the company has grown into the world's largest hunting travel office, with hunting partners in more than 40 counties and customers from around the world. This has only been possible because of the strength of our customers faith in our company, our partners and the service we provide. We take great pride in the fact that a significant number of our customers are "regulars" you not only travel with us frequently, but also bring with then new customers into our business.

The hunting travel market has never been as chaotic as it is at present. There have always been a mass of smalland medium sized agencies trading on the market, but in recent years the rise of the internet has really opened up the market for direct booking and packages sold by "agents" of more or less transparent character and by agencies based abroad.

A large number of hunters have had their fingers burnt booking "cheap" packages, which rarely proceed as promised, Generally it is only when things go wrong that the unfortunate hunter who bought the tour first realises what the difference between a good Danish travel agency - with all the security that entails -and a questionable foreign seller, really is.

What we offer our customers is a rather unique level of security. Our experienced staff really know our destinations and can provide highly qualified advice tailored to the customer's individual requirements. If you book your hunting tour through us you also have a guarantee against the unlikely event of bankruptcy through the Danish Travel Guarantee Fund. Our long standing membership of the Danish Travel Agency Association is also a guarantee for professional service throughout all the proceedings that a hunting tour entails - also in the event of something not going quite as planned. As one of our customers you can expect around the clock support, via our emergency hotline, in the event of anything at all going wrong.

**DO YOU HAVE  
QUESTIONS?**



**ERIK PEDERSEN BRINKMANN**

E-mail: [epb@diana.dk](mailto:epb@diana.dk)  
Telephone: (+45) 63 21 43 17



**TINA JEPPESEN**

E-mail: [tina@diana.dk](mailto:tina@diana.dk)  
Telephone: (+45) 63 21 10 29