



# ANTILOPE HUNT WITH OMUJEVE SAFARIS



Very popular arrangement for the last couple of seasons. Only 45 minutes drive from the airport at Windhoek.



Challenging hunt



Requires moderate level of fitness



Accommodation in a lodge



Safari Hunt



Cull Hunt/Hind Stalking



## HIGHLIGHTS & DESCRIPTION

# Antelope Hunt with Omujeve Safaris



### Overview

The plains game hunts with Omujeve Safaris primarily take place on Omujeve's own farms, where you stay at the very nice Omujeve Lodge, which lies only about 60 kms from the airport at Windhoek - a big advantage after the long flight. Because of the short drive to Omujeve Lodge, you start hunting already on the arrival day (½ hunting day), and likewise on the day of departure (½ hunting day).

However, Omujeve also has a farm further south (Schonbrunn in the Kalahari), and sometimes you hunt both on Omujeve and on Schonbrunn on a normal plains game hunt. It will be up to Omujeve to decide whether you will hunt at Omujeve and/or at Schonbrunn.

### HIGHLIGHTS

- Very reasonable trophy fees
- Good game population
- Very popular destination over the last many seasons
- Possibility of not only hunting on Omujeve's farm, but also on other farms in Schonbrunn



**DO YOU HAVE  
QUESTIONS?**



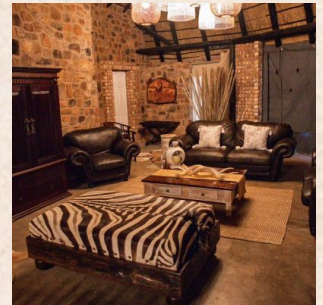
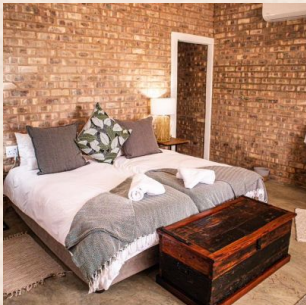


## ACCOMMODATION Verdwaal og Kalahari



Verdwaal has 6 luxurious suites for our guests - there is a swimming pool, many lounge areas and a fireplace.

The Kalahari lodge has recently been upgraded, so you will have a stay like no other. There is of course also a swimming pool, so you can cool off on hot days.



DO YOU HAVE  
QUESTIONS?





**PARTNER**

## **Omujeve Hunting Safaris**



We have worked with Omujeve for many years now, and the co-operation runs smoothly. Omujeve always gives our clients some wonderful experiences, and they provide top trophies time after time. We therefore have a lot of clients who have visited Omujeve more than once - and we cannot give this destination a better recommendation than that !

**DO YOU HAVE  
QUESTIONS?**



## HUNTING AREA Verdwaal og Kalahari



Verdwaal is located 100 km west of Windhoek and covers 40,000 ha. Here you can find all the native antelope species as well as Roan, Sable, Cheetah, Hyena and Leopard. The Kalahari is located only 83 km from the airport in Windhoek at the foot of a towering mountain, and is 55,000 ha. Here you can experience the vast beauty of the wilderness.



**DO YOU HAVE  
QUESTIONS?**



# Price and info on your tour

## Specification of price

### Prices

Description	Possible Lodging Dates	Price from (per. person)
1) Price per hunter 1:1	25. April 2024 - 24. November 2024	€3,595,00 (Observer €1,750,00)
2) Price per hunter 2:1	25. April 2024 - 24. November 2024	€3,135,00 (Observer €1,750,00)

### The price includes

- Car transfer from/to Windhoek airport
- 6 days accommodation with full board, local drinks and laundry service
- 6 hunting days with a PH, a skinner and a tracker
- All transport during the hunt
- Hunting licence
- Namibian VAT of 15 %
- 1 % government tax on accommodation

### The price does not include

- Flight ticket to/from Windhoek
- Airport taxes
- Trophy fees
- 25 % on top of the trophy fee for wounded and not found antelopes
- Taxidermy work and shipment of trophies
- Possible extra activities for non-hunters
- Rental of rifle + ammunition
- Gratuities - 10 % will be added to the total amount for camp staff and skinner
- Booking fee, Euro 200 per hunter
- Travel and cancellation insurance
- EU liability insurance, Euro 10,00,- per person

**DO YOU HAVE  
QUESTIONS?**



## Trophy Fees in USD 2024

Baboon	250
Black-backed Jackal	0
Blesbok	850
Blesbok White	1250
Damara Dik-Dik	2500
Caracal	1200
Cheetah	12000
Duiker	450
Eland	2850
Oryx	850
Oryx Golden	3500
Giraffe	4000
Impala	650
Impala black-faced	1500
Impala Black	2500
Kudu	3500
Lechwe	3500
Nyala	4500
Hartebeest	950
Roan	8500
Sable	6000
Springbuck	550
Springbuck Black	950
Springbuck White	1800
Springbuck Copper	1250
Steenbok	500
Tsessebe	4000
Warthog	500
Waterbuck	1750
Blue Wildebeest	900
Black Wildebeest	1750
Zebra Burchells	1150
Zebra Hartmanns, mountain	1500

**DO YOU HAVE  
QUESTIONS?**





# GAME Antelope Hunt with Omujeve Safaris



Burchell's Zebra



Zebra, Mountain



Black Wildebeest



Bontebok/Blesbok



Kudu, Greater



Hartebeest, Red



Blue Wildebeest



Springbuck/Springbok



Eland, Cape/Livingstone,  
Patterson's



Warthog



Oryx, Gemsbok



Duiker, Grey/Duiker,  
Grimm's (Common)

*To be continued on the next page...*





## GAME Antelope Hunt with Omujeve Safaris



Steenbuck/Steenbok



Waterbuck



Impala

DO YOU HAVE  
QUESTIONS?





## About us

i

### Limpopo & Diana Hunting Tours

Limpopo & Diana Hunting Tours Limpopo Travel and Diana Hunting Tours – which today are one and the same company - are built on more than four decades of experience in the hunting travel industry. Diana Hunting tours was founded in Svendborg back in 1974 by the internationally known figure in the hunting tour industry, Jan Krössteig, who today remains shareholder and chairman of the concern.

Over the years the company has grown into the world's largest hunting travel office, with hunting partners in more than 40 counties and customers from around the world. This has only been possible because of the strength of our customers faith in our company, our partners and the service we provide. We take great pride in the fact that a significant number of our customers are "regulars" you not only travel with us frequently, but also bring with them new customers into our business.

The hunting travel market has never been as chaotic as it is at present. There have always been a mass of small and medium sized agencies trading on the market, but in recent years the rise of the internet has really opened up the market for direct booking and packages sold by "agents" of more or less transparent character and by agencies based abroad.

A large number of hunters have had their fingers burnt booking "cheap" packages, which rarely proceed as promised. Generally it is only when things go wrong that the unfortunate hunter who bought the tour first realises what the difference between a good Danish travel agency - with all the security that entails - and a questionable foreign seller, really is.

What we offer our customers is a rather unique level of security. Our experienced staff really know our destinations and can provide highly qualified advice tailored to the customer's individual requirements. If you book your hunting tour through us you also have a guarantee against the unlikely event of bankruptcy through the Danish Travel Guarantee Fund. Our long standing membership of the Danish Travel Agency Association is also a guarantee for professional service throughout all the proceedings that a hunting tour entails - also in the event of something not going quite as planned. As one of our customers you can expect around the clock support, via our emergency hotline, in the event of anything at all going wrong.

**DO YOU HAVE  
QUESTIONS?**