



# HUNT FOR ANTELOPE AT GERS SAFARIS



Our only partner in Northern Cape province, not so far from the town of Kimberley. Hunting for 30 different game species - including slightly rarer species such as White Blesbok, all 4 Springbok colour variants, Scimitar Oryx, Tsessebe, Sable and Roan.



Challenging hunt



Requires moderate level of fitness



Accommodation in a lodge



Safari Hunt



Cull Hunt/Hind Stalking



## HIGHLIGHTS & DESCRIPTION

# Hunt for Antelope at Gers Safaris

### Overview

Papkuil Reserve, home of GERS Safaris, lies nestled in the heart of untamed diamond country, 120 km from the historical town of Kimberley (Northern Cape) - home to the largest man-made excavation site in the world.

Owners Julius and Madelene Gers, and their team of highly trained professional hunters and trackers, have gone to great lengths to create a fully authentic hunting experience that is about skill, and not just the kill.

The area's wide open spaces, clear skies, flamboyant sunsets, brilliant starry nights, and palpable silence offer an experience found nowhere else in the world. It is a place where natural beauty and adventure go hand in hand.

40 species of game including a variety of species such as Buffalo, Roan, Sable, Lechwe, Tsessebe, Wildebeest, Gemsbok, and Springbuck are available to hunt on 15 000 ha at Gers Safaris with access to more than 100 000 ha of privately owned land spread across large tracks of the Northern Cape.

Julius has a deep knowledge of South African Game, and is happy to share his experience with his guests.

### HIGHLIGHTS

- Malaria free area
- Observers and children welcome
- Here we can offer hunting for 40 different game species
- It is possible to hunt for many "rare" species
- Here you can find all 4 colour variants of Springbuck
- Scimitar Oryx, Tsessebe, Sable, Roan, Buffalo

**DO YOU HAVE  
QUESTIONS?**



**ERIK PEDERSEN BRINKMANN**

E-mail: [epb@diana.dk](mailto:epb@diana.dk)  
Telephone: (+45) 63 21 43 17



**LINDA BERTELSEN**

E-mail: [linda@diana.dk](mailto:linda@diana.dk)  
Telephone: (+45) 63 21 43 04



## ACCOMMODATION Klein Papkuil



Tucked under a canopy of ancient trees, the Papkuil Safari 4-star lodge with its spacious, classic farmhouse, conjures up memories of a peaceful and stylish bygone safari era.

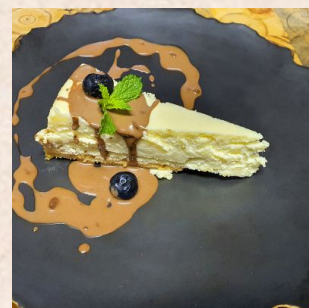
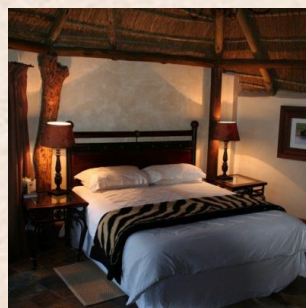
The elegant 12 en-suite units are well-appointed and situated within walking distance of each other, as well as the main house. Each unit is decorated with true South African elegance and offers views of vast open planes which truly capture the peaceful nature of the area.

Some of the units also offer an open-hearth fireplace and under floor heating, to cosy up on those cold Northern Cape winter nights.

In the evenings, sundowners are served on the deck, overlooking the reserve's famous water hole, where wildlife regularly come to drink.

As day fades away, guests can take pictures of our spectacular sunsets and relax around a South African style campfire to share stories of the day's experiences, while 5-star African cuisine is

being prepared.



**DO YOU HAVE  
QUESTIONS?**



**ERIK PEDERSEN BRINKMANN**

E-mail: [epb@diana.dk](mailto:epb@diana.dk)  
Telephone: (+45) 63 21 43 17



**LINDA BERTELSEN**

E-mail: [linda@diana.dk](mailto:linda@diana.dk)  
Telephone: (+45) 63 21 43 04



## PARTNER Gers Safaris



Our only partner in the Northern Cape.

Gers Safaris is managed by the husband and wife team of Madelene and Julius Gers, Professional Hunter Ronald Stock and Lodge Manager Lee Stock, who take pride in giving their guests not only unforgettable hunting, but also high class culinary experiences.

Gers Safaris makes your safari dream a reality.

Here you will quickly feel at home, Julius is happy to share his wide experience of South African wildlife with his guests.

Over the years we have sent many hunters to this fantastic place, and all - without exception - have been absolutely thrilled.

**DO YOU HAVE  
QUESTIONS?**



**ERIK PEDERSEN BRINKMANN**

E-mail: [epb@diana.dk](mailto:epb@diana.dk)  
Telephone: (+45) 63 21 43 17



**LINDA BERTELSEN**

E-mail: [linda@diana.dk](mailto:linda@diana.dk)  
Telephone: (+45) 63 21 43 04



## HUNTING AREA Gers Safaris



Gers Safaris offers some of the best hunting opportunities on the continent. This is not canned hunting, but rather the thrilling, pulse racing, adrenaline thumping real deal. Vegetation is thick bush with clearings (pans) ideal for stalking. Your skills as a hunter will be challenged in many ways that you have never experienced before.

Both bow and rifle hunting are accommodated at Gers Safaris, which offer the hunter the opportunity to match his skill set and wits against the animals in their natural environment.

Gers Safaris offers an abundance of game and sheer variety.

It is our aim to provide clients with an enjoyable and satisfying experience, while also safe guarding the ecological integrity of the wilderness. We are dedicated to providing an exemplary, personalised service that will have our clients leave as friends.



**DO YOU HAVE  
QUESTIONS?**



**ERIK PEDERSEN BRINKMANN**

E-mail: [epb@diana.dk](mailto:epb@diana.dk)  
Telephone: (+45) 63 21 43 17



**LINDA BERTELSEN**

E-mail: [linda@diana.dk](mailto:linda@diana.dk)  
Telephone: (+45) 63 21 43 04



# Price and info on your tour

## Specification of price

### Prices

Description	Possible Lodging Dates	Price from (per. person)
Price per hunter 1:1	9. July 2025 - 25. December 2025	\$2,600.00 (Observer \$1,350.00)
Price per hunter 2:1	9. July 2025 - 25. December 2025	\$2,100.00 (Observer \$1,350.00)

### The price includes

- Return transfers Kimberley airport-Gers Safaris
- 5 days hunting with a prof. hunter
- 6 days accommodation with full board and non-alcoholic drinks.
- Daily laundry service
- All transport during the hunt
- South African VAT at 14 %

### The price does not include

- Return flights to Kimberley
- Airport taxes
- Alcoholic drinks
- Trophy fees
- Taxidermy and shipment of trophies home
- Gratuities
- Booking fee, US\$ 250 per hunter
- Travel and cancellation insurance
- EU liability insurance, EUR 10,00,-

**DO YOU HAVE  
QUESTIONS?**



**ERIK PEDERSEN BRINKMANN**

E-mail: [epb@diana.dk](mailto:epb@diana.dk)  
Telephone: (+45) 63 21 43 17



**LINDA BERTELSEN**

E-mail: [linda@diana.dk](mailto:linda@diana.dk)  
Telephone: (+45) 63 21 43 04



## Trophy price list 2025 (USD)

Blesbok	-	Grey Duiker
Blesbok Saddleback		Red Lechwe
Blesbok White		Steenbuck
		Warthog
Bontebok	-	
Eland, cape	-	Springbuck
Red Hartebeest	-	Springbuck Black
		Springbuck Copper
Kudu Cape		Springbuck White

**DO YOU HAVE  
QUESTIONS?**



**ERIK PEDERSEN BRINKMANN**

E-mail: [epb@diana.dk](mailto:epb@diana.dk)  
Telephone: (+45) 63 21 43 17



**LINDA BERTELSEN**

E-mail: [linda@diana.dk](mailto:linda@diana.dk)  
Telephone: (+45) 63 21 43 04



Kudu Greater <55		Springbuck Painted	
Kudu Greater >55		Springbuck King	
		Springbuck Blue	
Mt. Reedbuck	-		
Impala	-	Black Wildebeest	
Black Impala	-	Seretse Wildebeest	
Zebra Burchell	-	Golden Wildebeest	
Zebra mountain	-	King Wildebeest	
	-	Blue Wildebeest	
Oryx			
Painted Oryx		Roan 24-26"	

**DO YOU HAVE  
QUESTIONS?**



**ERIK PEDERSEN BRINKMANN**

E-mail: epb@diana.dk  
Telephone: (+45) 63 21 43 17



**LINDA BERTELSEN**

E-mail: linda@diana.dk  
Telephone: (+45) 63 21 43 04



Golden Oryx	-	Roan 27-28"	
		Roan 29-30"	
Red Oryx		Roan > 30"	
Scimitar Oryx	-	Giraffe	
		Nyala	
Sable 36-38"	-	Barbary Sheep	
Sable 39-41"		Tsessebe	
Sable 42-44"		Waterbuck	
Sable >44"	-		

**DO YOU HAVE  
QUESTIONS?**



**ERIK PEDERSEN BRINKMANN**

E-mail: [epb@diana.dk](mailto:epb@diana.dk)  
Telephone: (+45) 63 21 43 17



**LINDA BERTELSEN**

E-mail: [linda@diana.dk](mailto:linda@diana.dk)  
Telephone: (+45) 63 21 43 04



Cape Buffalo 36-38"		-		
Cape Buffalo 39-41"		-		
Cape Buffalo 42-43"				
Cape Buffalo >43"				

**DO YOU HAVE  
QUESTIONS?**



**ERIK PEDERSEN BRINKMANN**

E-mail: [epb@diana.dk](mailto:epb@diana.dk)  
Telephone: (+45) 63 21 43 17



**LINDA BERTELSEN**

E-mail: [linda@diana.dk](mailto:linda@diana.dk)  
Telephone: (+45) 63 21 43 04





## GAME Hunt for Antelope at Gers Safaris



Barbary Sheep



Springbuck/Springbok



Oryx, Gemsbok



Burchell's Zebra



Eland, Cape/Livingstone,  
Patterson's



Blue Wildebeest



Springbuck/Springbok,  
Black



Nyala



Reedbuck, Mountain



Duiker, Grey/Duiker,  
Grimm's (Common)



Black Wildebeest



Bontebok/Blesbok

*To be continued on the next page...*





## GAME Hunt for Antelope at Gers Safaris



Waterbuck



Reedbuck (Common)



Giraffe



Ostrich



Buffalo, Cape



Warthog



Sassabe



Red Lechwe/Black  
Lechwe/Kafue



Roan



Kudu, East Cape



Sable Antelope (Africa)



Steenbuck/Steenbok

*To be continued on the next page...*





## GAME Hunt for Antelope at Gers Safaris



Impala



Scimitar Oryx/Scimitar-  
Horned Oryx



Hartebeest, Red



Zebra, Mountain

*DO YOU HAVE  
QUESTIONS?*



**ERIK PEDERSEN BRINKMANN**

E-mail: [epb@diana.dk](mailto:epb@diana.dk)  
Telephone: (+45) 63 21 43 17



**LINDA BERTELSEN**

E-mail: [linda@diana.dk](mailto:linda@diana.dk)  
Telephone: (+45) 63 21 43 04



# About us



## Limpopo & Diana Hunting Tours

Limpopo & Diana Hunting Tours Limpopo Travel and Diana Hunting Tours – which today are one and the same company - are built on more than four decades of experience in the hunting travel industry. Diana Hunting tours was founded in Svendborg back in 1974 by the internationally known figure in the hunting tour industry, Jan Krössteig, who today remains shareholder and chairman of the concern.

Over the years the company has grown into the world's largest hunting travel office, with hunting partners in more than 40 counties and customers from around the world. This has only been possible because of the strength of our customers faith in our company, our partners and the service we provide. We take great pride in the fact that a significant number of our customers are "regulars" you not only travel with us frequently, but also bring with then new customers into our business.

The hunting travel market has never been as chaotic as it is at present. There have always been a mass of smalland medium sized agencies trading on the market, but in recent years the rise of the internet has really opened up the market for direct booking and packages sold by "agents" of more or less transparent character and by agencies based abroad.

A large number of hunters have had their fingers burnt booking "cheap" packages, which rarely proceed as promised, Generally it is only when things go wrong that the unfortunate hunter who bought the tour first realises what the difference between a good Danish travel agency - with all the security that entails -and a questionable foreign seller, really is.

What we offer our customers is a rather unique level of security. Our experienced staff really know our destinations and can provide highly qualified advice tailored to the customer's individual requirements. If you book your hunting tour through us you also have a guarantee against the unlikely event of bankruptcy through the Danish Travel Guarantee Fund. Our long standing membership of the Danish Travel Agency Association is also a guarantee for professional service throughout all the proceedings that a hunting tour entails - also in the event of something not going quite as planned. As one of our customers you can expect around the clock support, via our emergency hotline, in the event of anything at all going wrong.

**DO YOU HAVE  
QUESTIONS?**



**ERIK PEDERSEN BRINKMANN**

E-mail: [epb@diana.dk](mailto:epb@diana.dk)  
Telephone: (+45) 63 21 43 17



**LINDA BERTELSEN**

E-mail: [linda@diana.dk](mailto:linda@diana.dk)  
Telephone: (+45) 63 21 43 04