



# CULL HUNT WITH FRONTIER SAFARIS



Popular, Low Cost Cull Hunt



Challenging hunt



Requires moderate level of fitness



Accommodation in a lodge



Spot-and-Stalk Hunt



Safari Hunt





## HIGHLIGHTS & DESCRIPTION

# Cull Hunt with Frontier Safaris



### Overview

We have noticed an increased demand for cull hunts in Africa, and therefore have been in contact with our partners there to ask if they could come up with some interesting low cost packages. Frontier Safaris in Eastern Cape province has heard our plea, so now we can offer an exciting 7 day hunt, 1:1 that includes 14 head of game per hunter at a really good price!

When you visit Frontier Safaris, you should first fly to Port Elizabeth. Here you will be met and driven out to their large, very scenic hunting district. The district consists of 27,000 ha, in a single continuous district. The accommodation lies in the heart of the district, thus avoiding long drives when you go out hunting.

### HIGHLIGHTS

- Hunting district of 27,000 hectares
- Beautiful countryside
- Good and varied game populations
- Much hunting for little money



**DO YOU HAVE  
QUESTIONS?**



**ERIK PEDERSEN BRINKMANN**

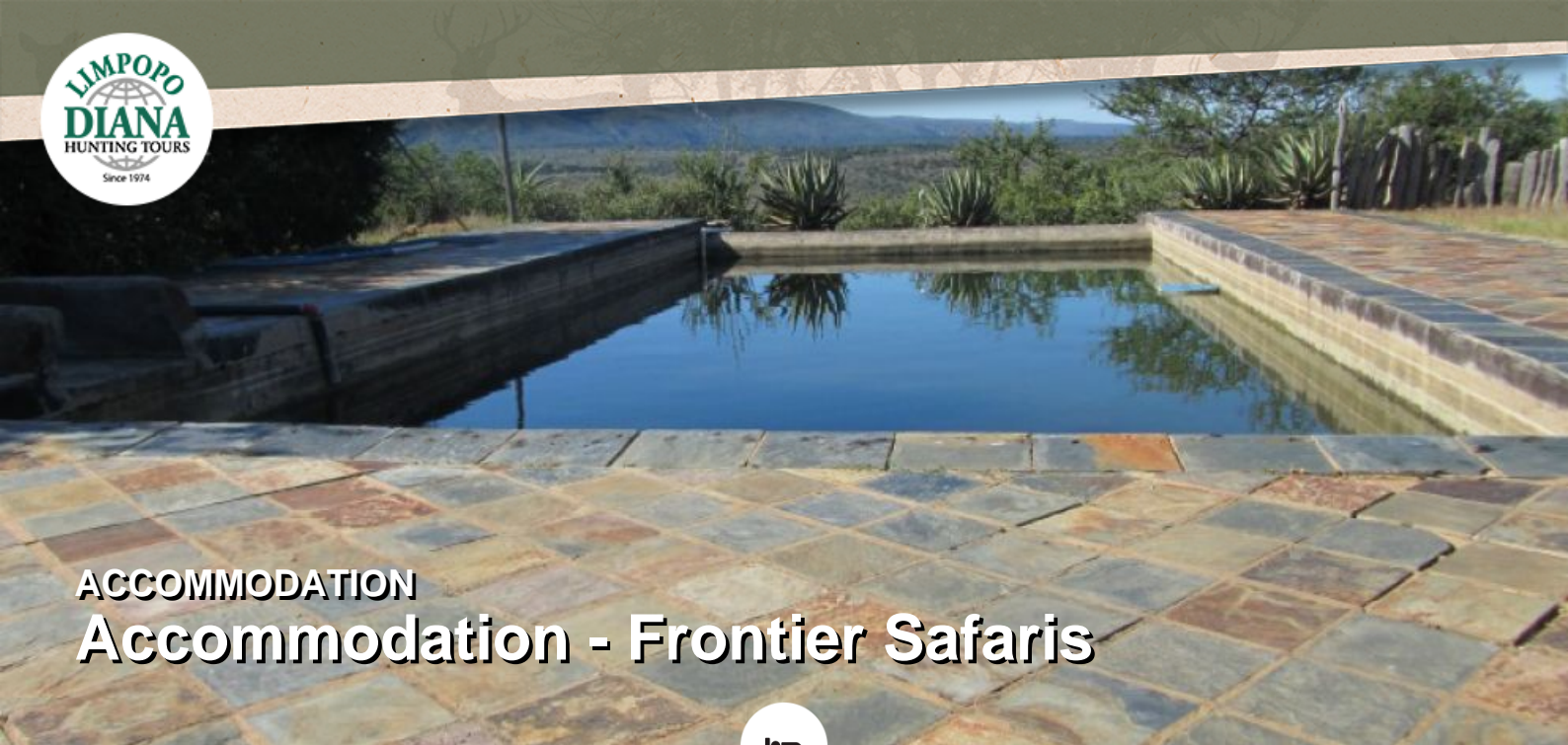
E-mail: [epb@diana.dk](mailto:epb@diana.dk)  
Telephone: (+45) 63 21 43 17



**LINDA BERTELSEN**

E-mail: [linda@diana.dk](mailto:linda@diana.dk)  
Telephone: (+45) 63 21 43 04





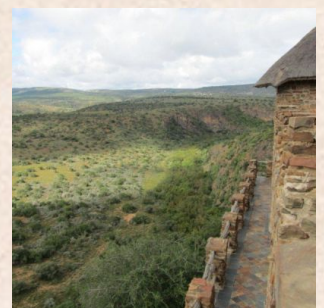
## ACCOMMODATION

# Accommodation - Frontier Safaris



The camp is beautifully situated with a view over the bush, and the accommodation takes place in spacious bungalows built from stones from the bush. Each bungalow has its own bathroom, and a great view. There is a total of 16 bungalows, so this place is suitable for bigger group.

There is also a swimming pool, if you should need to be cooled down. The meals you have either in the common lodge or in the boma, where the food is being served in nice surroundings with a fire in the evening, and where there is also a bar area.



**DO YOU HAVE  
QUESTIONS?**



**ERIK PEDERSEN BRINKMANN**

E-mail: [epb@diana.dk](mailto:epb@diana.dk)  
Telephone: (+45) 63 21 43 17



**LINDA BERTELSEN**

E-mail: [linda@diana.dk](mailto:linda@diana.dk)  
Telephone: (+45) 63 21 43 04





**PARTNER**  
**Frontier Safaris**

88

Frontier Safaris arrange hunting in their own area Burchell Game Reserve in the Eastern Cape Province in South Africa. This area is situated about 110 km from the airport in Port Elizabeth (you fly domestic from Johannesburg to Port Elizabeth). Frontier Safaris naturally pick-up and take back their guests from/to Port Elizabeth. Burchell Game Reserve is incredible 27.000 hectares. A really beautiful area, in many places hilly and mountainous, but they also have flat and more open areas in the valleys and on top of the mountains. We have now been working with Frontier Safaris for 8 seasons, and the hunters we send there to hunt, return with very good feedback.

*DO YOU HAVE  
QUESTIONS?*



**ERIK PEDERSEN BRINKMANN**

E-mail: [epb@diana.dk](mailto:epb@diana.dk)  
Telephone: (+45) 63 21 43 17



**LINDA BERTELSEN**

E-mail: [linda@diana.dk](mailto:linda@diana.dk)  
Telephone: (+45) 63 21 43 04



## HUNTING AREA Frontier Safaris

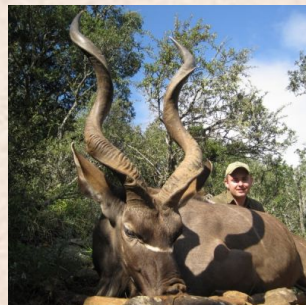


Frontier Safaris' hunting area is one big area of 27.000 hectares - with open plains, mountains and thick bush.

In the hunting area you can hunt a lot of different species, however none of the Big Five, but there is a very big variety of antelopes from the small Grey Duiker to the big Cape Eland.

Although it is sold at discount prices, there is nothing lacking with the hunting, accommodation, food or trophy quality - quite the opposite! The hunt takes place on a well cared for district covering 27,000 hectares in one continuous area - quite big enough for the game populations to live out a natural life in the bush.

Here you hunt in the traditional way - on foot, after the game has been spotted from a vehicle. In this district you can find good populations of all the local native antelope species such as kudu, blue and black wildebeest, eland, waterbuck, oryx, zebra etc. In total you can hunt approx. 30 species here!



**DO YOU HAVE  
QUESTIONS?**



**ERIK PEDERSEN BRINKMANN**

E-mail: [epb@diana.dk](mailto:epb@diana.dk)  
Telephone: (+45) 63 21 43 17



**LINDA BERTELSEN**

E-mail: [linda@diana.dk](mailto:linda@diana.dk)  
Telephone: (+45) 63 21 43 04



# Price and info on your tour

## Specification of price

### Prices

#### Description

#### Possible Lodging Dates

#### Price from (per. person)

#### The price includes

- Return transfers from Port Elizabeth airport to the hunting district
- 7 days hunting 1:1
- 8 nights accommodation with full board and soft drinks, beer and wine
- Laundry service
- All transport during the hunt
- Trophy fees for 14 head of cull game per hunter (the 14 head of cull game included are the following female animals: 2 x kudu, 2 x blue wildebeest, 5 x impala and 5 x blesbok)
- 15 % VAT on the cull animals

#### The price does not include

- Flights
- Extra trophy fees for game shot in addition to the 14 animals included in the package
- Gratuities
- Rifle hire
- Cartridges
- EU-public liability insurance € 5,50.-
- Insurance

**DO YOU HAVE  
QUESTIONS?**



**ERIK PEDERSEN BRINKMANN**

E-mail: [epb@diana.dk](mailto:epb@diana.dk)  
Telephone: (+45) 63 21 43 17



**LINDA BERTELSEN**

E-mail: [linda@diana.dk](mailto:linda@diana.dk)  
Telephone: (+45) 63 21 43 04



### Trophy Price List(USD)

Aardwolf	2500	-	Gemsbuck (Oryx)	1525
Baboon	800	-	Gemsbuck Golden	3500
Bat-eared Fox	1500	-	Genet Cat	500
Blesbuck	600	-	Impala	600
Blesbuck Copper	3000	-	Impala Black	3500
Blesbuck White	800	-	Jackal black-backed	800
Bontebok	1750	-	Klipspringer	1500
Bushpig	600	-	Lechwe	3500
Cape Bushbuck	800	-	Nyala	2750
Cape Eland	2750	-	Oribi	2500
Cape Grysbuck	2500	-	Ostrich	750
Cape Hartebeest	1350	-	Porcupine	500
Cape Kudu	1525	-	Reedbuck Common	1500
Cape Lynx	1500	-	Reedbuck Mountain	800
Duiker Blue	1500	-	Roan	10000
Duiker Common	350	-	Springbuck Black	800
Duiker Red	2500	-	Springbuck Common	600
			Springbuck White	1100
			Springbuck Copper	1500
			Steenbuck	350
			Sable	From 5000
			Suni	2500
			Scimitar Oryx	5000
			Vervet Monkey	300
			Vaal Rhebuck	2500
			Warthog	600
			Waterbuck	2750
			Wildebeest Black	1350

**DO YOU HAVE  
QUESTIONS?**



**ERIK PEDERSEN BRINKMANN**

E-mail: [epb@diana.dk](mailto:epb@diana.dk)  
Telephone: (+45) 63 21 43 17



**LINDA BERTELSEN**

E-mail: [linda@diana.dk](mailto:linda@diana.dk)  
Telephone: (+45) 63 21 43 04



		Wildebeest Blue	1350
		Wildebeest Golden	3500
		Zebra Burchells	1600

**DO YOU HAVE  
QUESTIONS?**



**ERIK PEDERSEN BRINKMANN**

E-mail: [epb@diana.dk](mailto:epb@diana.dk)  
Telephone: (+45) 63 21 43 17



**LINDA BERTELSEN**

E-mail: [linda@diana.dk](mailto:linda@diana.dk)  
Telephone: (+45) 63 21 43 04





# GAME Cull Hunt with Frontier Safaris



Kudu, East Cape



Blue Wildebeest



Bontebok/Blesbok



Impala

**DO YOU HAVE  
QUESTIONS?**



**ERIK PEDERSEN BRINKMANN**

E-mail: [epb@diana.dk](mailto:epb@diana.dk)  
Telephone: (+45) 63 21 43 17



**LINDA BERTELSEN**

E-mail: [linda@diana.dk](mailto:linda@diana.dk)  
Telephone: (+45) 63 21 43 04





# About us



## Limpopo & Diana Hunting Tours

Limpopo & Diana Hunting Tours Limpopo Travel and Diana Hunting Tours – which today are one and the same company - are built on more than four decades of experience in the hunting travel industry. Diana Hunting tours was founded in Svendborg back in 1974 by the internationally known figure in the hunting tour industry, Jan Krössteig, who today remains shareholder and chairman of the concern.

Over the years the company has grown into the world’s largest hunting travel office, with hunting partners in more than 40 counties and customers from around the world. This has only been possible because of the strength of our customers faith in our company, our partners and the service we provide. We take great pride in the fact that a significant number of our customers are “regulars” you not only travel with us frequently, but also bring with then new customers into our business.

The hunting travel market has never been as chaotic as it is at present. There have always been a mass of smalland medium sized agencies trading on the market, but in recent years the rise of the internet has really opened up the market for direct booking and packages sold by “agents” of more or less transparent character and by agencies based abroad.

A large number of hunters have had their fingers burnt booking “cheap” packages, which rarely proceed as promised, Generally it is only when things go wrong that the unfortunate hunter who bought the tour first realises what the difference between a good Danish travel agency - with all the security that entails -and a questionable foreign seller, really is.

What we offer our customers is a rather unique level of security. Our experienced staff really know our destinations and can provide highly qualified advice tailored to the customer’s individual requirements. If you book your hunting tour through us you also have a guarantee against the unlikely event of bankruptcy through the Danish Travel Guarantee Fund. Our long standing membership of the Danish Travel Agency Association is also a guarantee for professional service throughout all the proceedings that a hunting tour entails - also in the event of something not going quite as planned. As one of our customers you can expect around the clock support, via our emergency hotline, in the event of anything at all going wrong.

**DO YOU HAVE  
QUESTIONS?**



**ERIK PEDERSEN BRINKMANN**

E-mail: [epb@diana.dk](mailto:epb@diana.dk)  
Telephone: (+45) 63 21 43 17



**LINDA BERTELSEN**

E-mail: [linda@diana.dk](mailto:linda@diana.dk)  
Telephone: (+45) 63 21 43 04